




Translating a High-level Policy Directive Into Layman-understood Items for Ageing Policy Evaluation



A JOINT EFFORT BETWEEN
ASIA-PACIFIC INSTITUTE OF AGEING STUDIES, LINGNAN UNIVERSITY
SOCIAL WELFARE BUREAU, MACAO SAR GOVERNMENT

Prof Alfred CHAN Cheung Ming / Director
Phoebe TANG Pui Yee / Senior Project Officer



Outline


1. Background/Context: Ageing in Asia Pacific
2. United Nations' Response to Ageing: MIPPA
3. The machinery - Ageing Policy Integrative Appraisal System
 - Guiding Framework → Operation System
 - Providers (top-down) ← → Receiver (bottom-up)
4. Results/Implications



A BIG THANKYOU for their support!



Social Welfare Bureau
Macao SAR Government



Context: What ageing means to AP region?


- AP has the longest longevity plus the biggest aged population in the world
- AP ages faster than any places as ever recorded in human history
- AP population gets old before rich
- AP has aged women outnumbering aged men in male oriented culture
- AP has huge difference between urban and rural areas

4




United Nations' Response to Ageing: MIPAA

- Madrid International Plan of Action on Ageing adopted in the Second World Assembly on Ageing in 2002 in Madrid
- MIPAA is a response to opportunities and challenges of population ageing and to promote a society of all ageing



MIPAA (2002)			SIS (2003)
3 priority directions*			4 priority directions
18 priority issues*			16 priority issues
239 key actions*			88 key actions
PA-I Older Persons & Development	PA-II Advancing Health into Old Age	PA-III Ensuring Enabling Supportive Environments	PA-IV Implementation & Follow-up Action
AA-1: The challenges & mainstreaming ageing AA-2: Protection & security AA-3: Alleviation of poverty AA-4: Older persons and emergencies AA-5: Positive attitudes toward Ageing AA-6: Employability & workability AA-7: Gender specific issues: The concerns of older women	AA-8: Quality of life at all ages AA-9: Quality health & Long-term Care	AA-10: Older persons & the families AA-11: Social services & Communities support AA-12: Housing & living environment AA-13: Care and Support to caregivers AA-14: Protection of the rights of older persons	AA-15: National Mechanisms AA-16: Regional & Inter-government cooperation

* Refers to MIPAA



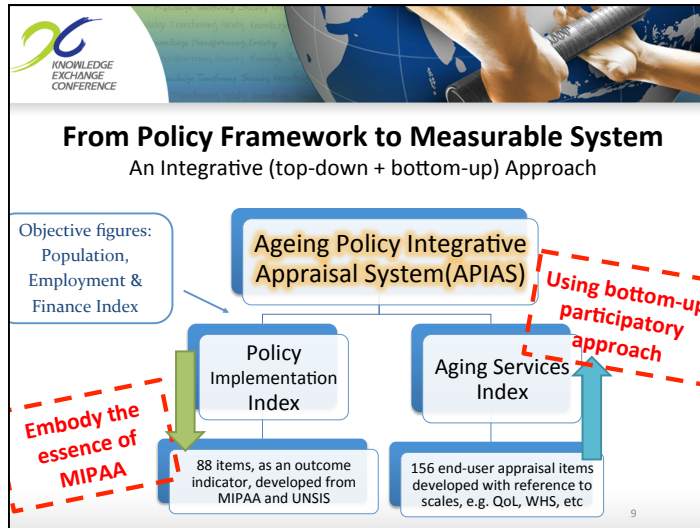
2012 - MIPAA in its 10th year of Implementation

- MIPAA is a policy document
- UN-led review is carried out on a 5-year basis
- Collect information on national actions → SITREP
- Periodic SITREP → Overview on how region is doing



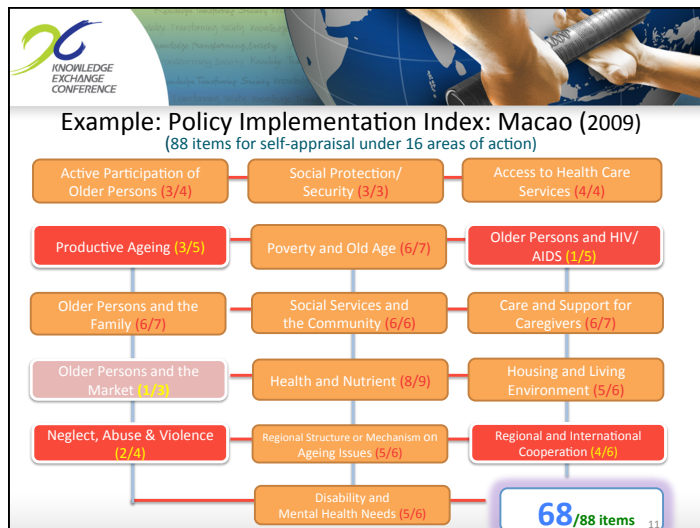
MIPAA is a High-level Policy Directive

HOW TO MAKE IT ACCESSIBLE TO POLICY-MAKERS?



Policy Implementation Index
TOP-DOWN Implementation Framework

Preparation Stage	Execution Stage	Evaluation & Appraisal Stage
<ul style="list-style-type: none"> Collection of policy data and information from publications Orientation to relevant government bureaus and departments 	<ul style="list-style-type: none"> 2nd wave collection of policy data and information based on responses from individual bureaus and departments In-depth interviews with individual bureaus and department Request for supplementary policy data and information 	<ul style="list-style-type: none"> 88-item appraisal report for every individual bureau and department visited (to be approved by expert panel) 88-item appraisal report for the administration based on the individual reports (to be approved by expert panel)
Collection of Data		
<ul style="list-style-type: none"> Desktop review of available material e.g. reports, papers, news, etc Briefing session with relevant parties by project leader 	<ul style="list-style-type: none"> Questionnaire survey (YES/NO) requesting evidence Consultants to conduct in-depth interview with government representatives 	<ul style="list-style-type: none"> Compile data collected from preparation and execution stage Verify by expert panel



MIPPA is a High-level Policy Directive

HOW TO MAKE IT WORK FOR AND AVAILABLE TO THE SOCIETY?

